

每個住宅物業的層與層之間的高度：
3.500米及3.800米(適用於第8座29樓A單位；
不適用於第8座29樓E、F、G及H單位)

The floor-to-floor height of each residential property:
3.500m and 3.800m (Applicable to Unit A on 29/F of
Tower 8; Not applicable to Units E, F, G and H on
28/F of Tower 8)

每個住宅物業的樓板(不包括灰泥)的厚度：
125毫米及150毫米(適用於第8座29樓A單位；不適
於第8座29樓E、F、G及H單位)

The thickness of the floor slabs (excluding plaster)
of each residential property: 125mm and 150mm
(Applicable to Unit A on 29/F of Tower 8; Not
applicable to Units E, F, G and H on 29/F of Tower 8)

因住宅物業的較高樓層的結構牆的厚度遞減，較
高樓層的內部面積，一般比較低樓層的內部面積
稍大。

The internal areas of the residential properties on the
upper floors will generally be slightly larger than those
on the lower floors because of the reducing thickness
of the structural walls on the upper floors.

備註：

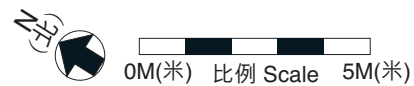
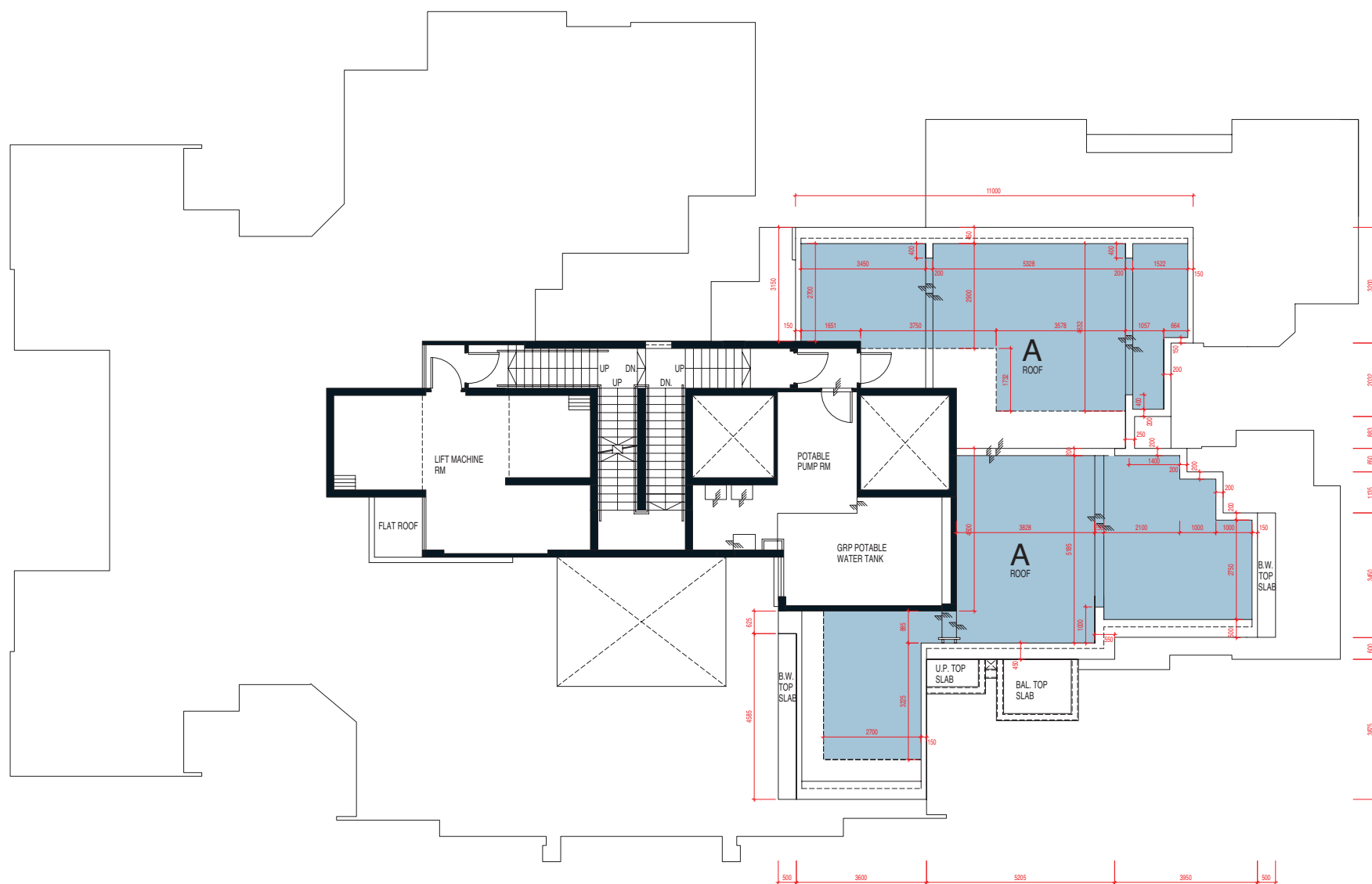
- 1) 以上樓面平面圖中顯示之名詞及簡稱之詞彙表
請參閱本售樓說明書第15頁。
- 2) 住宅樓層不設4樓、13樓、14樓及24樓。

Remarks:

- 1) Please refer to page 15 of this sales brochure for
glossary of the terms and abbreviations shown in
the floor plan above.
- 2) Residential floors on 4/F, 13/F, 14/F and 24/F are
omitted.

* 此面盆、面盆櫃、洗滌盤、廚櫃或氣體煮食爐
之位置、大小及形狀在期數落成後透過進行小
型工程或獲《建築物條例》豁免的工程而有所改
動。

The location, size and shape of this basin, basin
cabinet, sink, kitchen cabinet or gas hobs have been
altered by way of minor works or exempted works
under the Buildings Ordinance after completion of the
Phase.



每個住宅物業的層與層之間的高度：
不適用

The floor-to-floor height of each residential property:
Not applicable

每個住宅物業的樓板(不包括灰泥)的厚度：不適用
The thickness of the floor slabs (excluding plaster) of
each residential property: Not applicable

因住宅物業的較高樓層的結構牆的厚度遞減，較
高樓層的內部面積，一般比較低樓層的內部面積
稍大。

The internal areas of the residential properties on the
upper floors will generally be slightly larger than those
on the lower floors because of the reducing thickness
of the structural walls on the upper floors.

備註：

- 1) 以上樓面平面圖中顯示之名詞及簡稱之詞彙表
請參閱本售樓說明書第15頁。
- 2) 住宅樓層不設4樓、13樓、14樓及24樓。

Remarks:

- 1) Please refer to page 15 of this sales brochure for
glossary of the terms and abbreviations shown in
the floor plan above.
- 2) Residential floors on 4/F, 13/F, 14/F and 24/F are
omitted.